

"SKYLARK"

H. Carmichael - Arr. G. Gourmaud

A

♩ = 80 Swing

Saxophone soprano

Saxophone ténor

Trombone 1

Trombone 2

Contrebasse

Batterie

B

Sax. Sop.

Sax. T.

Trb. 1

Trb. 2

Cb. Basse

Perc.

C

Sax. Sop.

Sax. T.

Trb. 1

Trb. 2

Cb. Basse

Perc.

C

Sax. Sop.

Sax. T.

Trb. 1

Trb. 2

Cb. Basse

Perc.

"Skylark"

2

36 rit. **D** ♩=96 Straight

Sax. Sop.
Sax. T.
Trb. 1
Trb. 2
Cb. Basse
Perc.

43

Sax. Sop.
Sax. T.
Trb. 1
Trb. 2
Cb. Basse
Perc.

FΔ Gm7 Am7 B♭7|1 FΔ B♭7|1 B♭Δ Am7

49 **E**

Sax. Sop.
Sax. T.
Trb. 1
Trb. 2
Cb. Basse
Perc.

Dm7 G7 Gm7 C7

54

Sax. Sop.
Sax. T.
Trb. 1
Trb. 2
Cb. Basse
Perc.

59 **F**

Sax. Sop.

Sax. T.

Trb. 1

Trb. 2

Cb. Basse

Perc.

63

Sax. Sop. Solo cont.

Sax. T.

Trb. 1

Trb. 2

Cb. Basse

Perc.

67 End solo ténor **G**

Sax. Sop.

Sax. T.

Trb. 1

Trb. 2

Cb. Basse

Perc.

73 rit. **H** ♩=68 Swing

Sax. Sop.

Sax. T.

Trb. 1

Trb. 2

Cb. Basse arco

Perc.

"Skylark"

4

79

The musical score for "Skylark" is presented on a page numbered 4. It begins at measure 79. The score is arranged for six parts: Saxophone Soprano (Sax. Sop.), Saxophone Tenor (Sax. T.), Trumpet 1 (Trb. 1), Trumpet 2 (Trb. 2), Contrabass (Cb. Basse), and Percussion (Perc.). The Saxophone parts are written in treble clef with a key signature of one flat (B-flat major/D minor). The Trumpet and Contrabass parts are written in bass clef with a key signature of one flat. The Percussion part is represented by a single staff with a double bar line and a vertical line, indicating it is currently silent. The saxophone parts feature melodic lines with various note values, including quarter, eighth, and sixteenth notes, as well as rests. The trumpet parts provide harmonic support with chords and melodic fragments. The contrabass part plays a steady bass line. The piece concludes with a double bar line at the end of the eighth measure.

Trombone 2

"SKYLARK"

H.Carmichael - Arr. G. Gourmaud

♩=80 Swing

6 **A**

12 **B**

17

22

29 **C**

rit. ♩=96 Straight

35 **D**

Trombone 2

2

45

50

E

53

56

60

F

65

End solo ténor

69

G

73

rit.

78

H ♩=68 Swing

p

82

"SKYLARK"

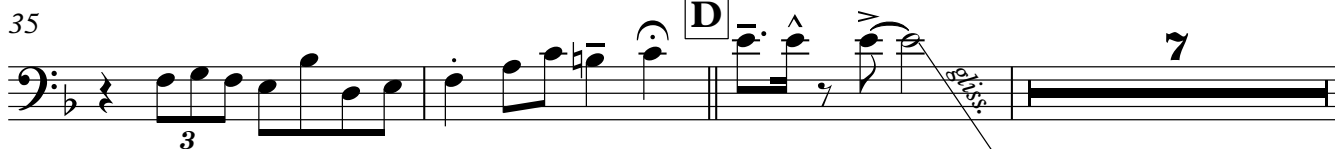
Trombone 1

H. Carmichael - Arr. G. Gourmaud

♩=80 Swing



rit. ♩=96 Straight



Trombone 1

45

49

53

56

60

66

End solo ténor

69

73

rit.

78

82

Saxophone ténor

"SKYLARK"

H. Carmichael - Arr. G. Gourmaud

♩=80 Swing

6 **A**

12 **B**

17

22

26

30 **C**

2

Saxophone ténor

rit.

32

♩=96 Straight

3

Detailed description: Musical staff 32-36. Treble clef, key signature of one sharp (F#). Measure 32 starts with a whole rest. Measure 33 has a quarter rest followed by a triplet of eighth notes (F#, G, A) with an accent (>) over the first note. Measure 34 has a half note B. Measure 35 has a half note C. Measure 36 has a half note D. A 'rit.' marking is above the staff.

37

D *tr* A7(#9)

Detailed description: Musical staff 37-43. Treble clef, key signature of one sharp. Measure 37 has a quarter note D with an accent (>) and a trill (tr) above it. Measure 38 has a quarter note E with an accent (>). Measure 39 has a quarter note F with an accent (>). Measure 40 has a quarter note G with an accent (>). Measure 41 has a quarter note A with an accent (>). Measure 42 has a quarter note B with an accent (>). Measure 43 has a quarter note C with an accent (>). A box labeled 'D' is above the first measure. A trill symbol 'tr' is above the first measure. The chord 'A7(#9)' is written below the staff.

44

GΔ Am7 Bm7 C7#11 GΔ C#7#11 CΔ Bm7 Em7 A7 Am7 D7

Detailed description: Chord progression staff 44-50. Treble clef, key signature of one sharp. Chords are written above the staff: GΔ, Am7, Bm7, C7#11, GΔ, C#7#11, CΔ, Bm7, Em7, A7, Am7, D7.

51

E 3

Detailed description: Musical staff 51-53. Treble clef, key signature of one sharp. Measure 51 has a quarter note D with an accent (>). Measure 52 has a quarter note E with an accent (>). Measure 53 has a quarter note F with an accent (>). A box labeled 'E' is above the first measure. A '3' is written below the end of the staff.

54

Detailed description: Musical staff 54-57. Treble clef, key signature of one sharp. Measure 54 has a quarter note G with an accent (>). Measure 55 has a quarter note A with an accent (>). Measure 56 has a quarter note B with an accent (>). Measure 57 has a quarter note C with an accent (>).

58

F Solo cont. *tr* A7(#9)

3/4 4/4

Detailed description: Musical staff 58-64. Treble clef, key signature of one sharp. Measure 58 has a quarter note D with an accent (>). Measure 59 has a quarter note E with an accent (>). Measure 60 has a quarter note F with an accent (>). Measure 61 has a quarter note G with an accent (>). Measure 62 has a quarter note A with an accent (>). Measure 63 has a quarter note B with an accent (>). Measure 64 has a quarter note C with an accent (>). A box labeled 'F' is above the first measure. 'Solo cont.' is written above the staff. A trill symbol 'tr' is above the first measure. The chord 'A7(#9)' is written below the staff. Time signatures 3/4 and 4/4 are indicated below the staff.

End solo ténor

65

G

Detailed description: Musical staff 65-70. Treble clef, key signature of one sharp. Measure 65 has a quarter note D with an accent (>). Measure 66 has a quarter note E with an accent (>). Measure 67 has a quarter note F with an accent (>). Measure 68 has a quarter note G with an accent (>). Measure 69 has a quarter note A with an accent (>). Measure 70 has a quarter note B with an accent (>). A box labeled 'G' is above the first measure.

71

rit.

Detailed description: Musical staff 71-76. Treble clef, key signature of one sharp. Measure 71 has a half note D. Measure 72 has a half note E. Measure 73 has a half note F. Measure 74 has a half note G. Measure 75 has a half note A. Measure 76 has a half note B. A 'rit.' marking is above the staff.

77

H ♩=68 Swing *p*

Detailed description: Musical staff 77-81. Treble clef, key signature of one sharp. Measure 77 has a whole note D. Measure 78 has a whole note E. Measure 79 has a whole note F. Measure 80 has a whole note G. Measure 81 has a whole note A. A box labeled 'H' is above the first measure. '♩=68 Swing' is written above the staff. A piano marking 'p' is below the first measure.

82

Detailed description: Musical staff 82-86. Treble clef, key signature of one sharp. Measure 82 has a quarter note D. Measure 83 has a quarter note E. Measure 84 has a quarter note F. Measure 85 has a quarter note G. Measure 86 has a quarter note A.

Saxophone soprano

"SKYLARK"

H.Carmichael - Arr. G. Gourmaud

♩=80 Swing

6 **A**

10

14 **B**

19

24

30 **C**

35 **D** rit. ♩=96 Straight

Saxophone soprano

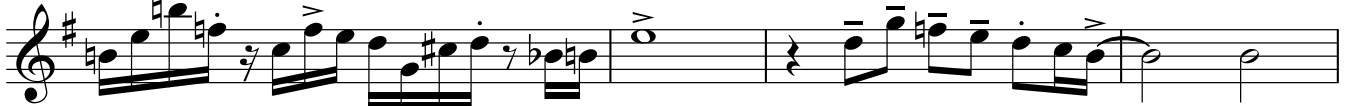
46



51 **E**



54



58



64

End solo ténor



69 **G**



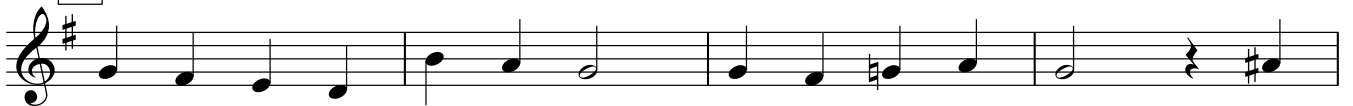
73

rit.



78 **H**

$\text{♩} = 68$ Swing



p

82



"SKYLARK"

H.Carmichael - Arr. G. Gourmaud

♩=80 Swing

First musical staff, bass clef, 4/4 time signature. It begins with a whole rest followed by a series of quarter notes: G2, F2, E2, D2, C2, B1, A1, G1. The piece ends with a fermata over a G1 note.

6 **A**

Second musical staff, bass clef, 4/4 time signature. It starts with a whole rest, followed by quarter notes: G2, A2, B2, C3, D3, E3, F3, G3. A triplet of eighth notes (G3, A3, B3) is marked with a '3' above it.

12 **B**

Third musical staff, bass clef, 4/4 time signature. It begins with a whole rest, followed by quarter notes: G2, A2, B2, C3, D3, E3, F3, G3. The piece ends with a fermata over a G3 note.

18

Fourth musical staff, bass clef, 4/4 time signature. It begins with a whole rest, followed by quarter notes: G2, A2, B2, C3, D3, E3, F3, G3. The piece ends with a fermata over a G3 note.

24

Fifth musical staff, bass clef, 4/4 time signature. It begins with a whole rest, followed by quarter notes: G2, A2, B2, C3, D3, E3, F3, G3. A triplet of eighth notes (G3, A3, B3) is marked with a '3' above it.

30 **C**

Sixth musical staff, bass clef, 4/4 time signature. It begins with a whole rest, followed by quarter notes: G2, A2, B2, C3, D3, E3, F3, G3. The piece ends with a fermata over a G3 note.

36 rit. **D** ♩=96 Straight

Seventh musical staff, bass clef, 4/4 time signature. It begins with a whole rest, followed by quarter notes: G2, A2, B2, C3, D3, E3, F3, G3. The piece ends with a fermata over a G3 note.

40

Eighth musical staff, bass clef, 4/4 time signature. It begins with a whole rest, followed by quarter notes: G2, A2, B2, C3, D3, E3, F3, G3. The piece ends with a fermata over a G3 note.

43

Ninth musical staff, bass clef, 4/4 time signature. It begins with a whole rest, followed by quarter notes: G2, A2, B2, C3, D3, E3, F3, G3. The piece ends with a fermata over a G3 note.

47

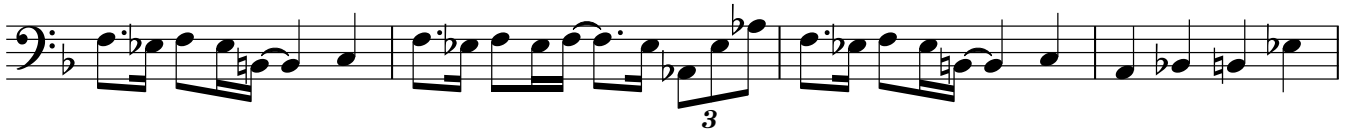
Tenth musical staff, bass clef, 4/4 time signature. It begins with a whole rest, followed by quarter notes: G2, A2, B2, C3, D3, E3, F3, G3. The piece ends with a fermata over a G3 note.

V.S.

Contrebasse

51 **E**

54



58

F

62



65



68 End solo ténor

G

72

rit. - - - - -

78 **H** ♩=68 Swing
arco

82



Batterie

"SKYLARK"

H.Carmichael - Arr. G. Gourmaud

♩=80 Swing

Musical staff with 4/4 time signature. The notation consists of diamond-shaped symbols on a five-line staff, representing a specific rhythmic pattern. The first four measures each contain two diamonds, followed by a quarter rest in the fifth measure.

6 **A**

Musical staff with rhythmic notation. Measure numbers 4 and 8 are indicated above the staff. The notation includes quarter notes, eighth notes, and rests.

14 **B**

Musical staff with rhythmic notation. Measure numbers 8 and 12 are indicated above the staff. The notation includes quarter notes, eighth notes, and rests.

23

Musical staff with rhythmic notation. Measure numbers 16 and 3 are indicated above the staff. The notation includes quarter notes, eighth notes, and rests.

30 **C**

Musical staff with rhythmic notation. Measure number 4 is indicated above the staff. A *rit.* marking is present above the staff. The notation includes quarter notes, eighth notes, and rests.

♩=96 Straight

37 **D**

Musical staff with complex rhythmic notation, including sixteenth notes and rests. A measure number 2 is indicated above the staff.

41

Musical staff with rhythmic notation. Measure numbers 2 are indicated above the staff. The notation includes quarter notes, eighth notes, and rests.

51 **E**

Musical staff with rhythmic notation. Measure numbers 2 and 3 are indicated above the staff. The notation includes quarter notes, eighth notes, and rests.

55

Musical staff with rhythmic notation. A measure number 2 is indicated above the staff. The notation includes quarter notes, eighth notes, and rests.

59 **F**

Musical staff with rhythmic notation. The time signature changes from 3/4 to 4/4. The notation includes quarter notes, eighth notes, and rests.

Batterie

2

End solo ténor

62

2 2 2

69 **G**

2

72

2 rit.

78 **H** ♩=68 Swing 8