

"BLUE MONK"

(Version en FA)

Thelonius Monk
Arr. G.G.

Trompette en Sib

Cornet en Sib

Saxophone ténor

Basse

Chord progression: F, Bb7, F, C7

Detailed description: This system contains the first three measures of the piece. The Trombone (Trompette en Sib) part has a melodic line starting on G4. The Horn (Cornet en Sib) and Tenor Saxophone parts play a rhythmic pattern of eighth notes with accents. The Bass part provides a steady accompaniment. Chords are indicated below the bass line: F, Bb7, F, and C7.

4

Chord progression: F, F7, Bb, Bb7

Detailed description: This system contains measures 4, 5, and 6. The Trombone part continues its melodic line. The Horn and Tenor Saxophone parts have more complex rhythmic patterns, including sixteenth notes and accents. The Bass part continues the accompaniment. Chords are indicated below the bass line: F, F7, Bb, and Bb7.

7

Chord progression: F, C7, F, C7, C7

Detailed description: This system contains measures 7, 8, and 9. The Trombone part features a triplet in measure 8. The Horn and Tenor Saxophone parts continue their rhythmic patterns. The Bass part continues the accompaniment. Chords are indicated below the bass line: F, C7, F, C7, and C7.

11

F C⁷ F B^b7

15

F C⁷ F F⁷ B^b B^b7

19

F C⁷ F C⁷

22

C⁷ F C⁷ To solo

Trompette en Sib

"BLUE MONK"

(Version en FA)

Thelonius Monk

Arr. G.G.



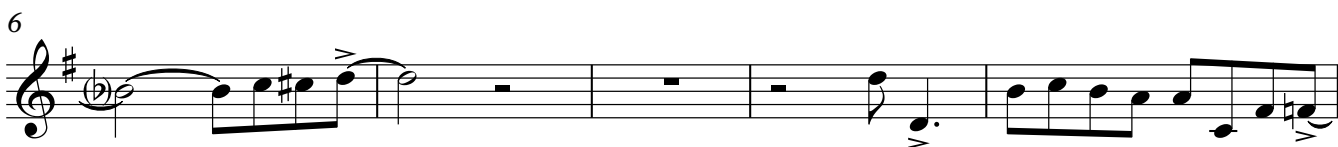
Cornet en Sib

"BLUE MONK"

(Version en FA)

Thelonius Monk

Arr. G.G.



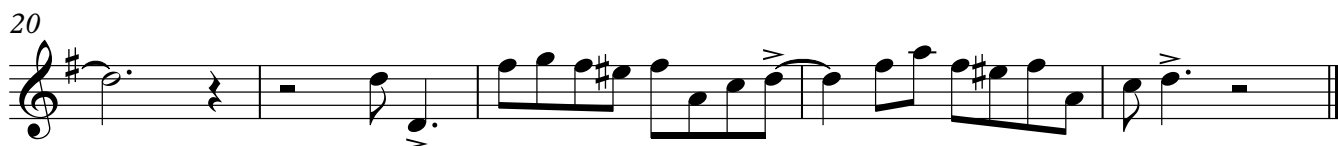
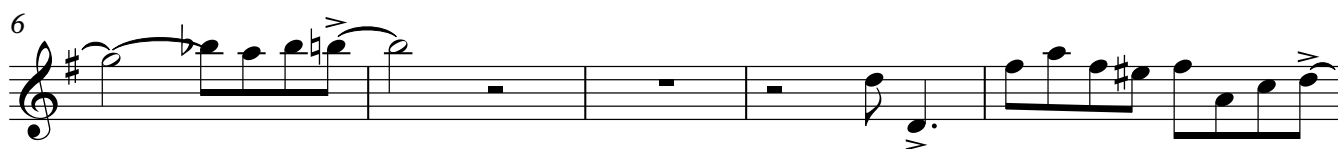
Saxophone ténor

"BLUE MONK"

(Version en FA)

Thélonius Monk

Arr. G.G.



Basse

"BLUE MONK"

(Version en FA)

Thelonius Monk

Arr. G.G.

1 F Bb7 F C7 F F7 Bb

6 B^{o7} F C7 F C7

10 C7 F C7 F

14 Bb7 F C7 F F7 Bb

18 B^{o7} F C7 F C7

22 C7 F C7 To solo

The image shows a bass line for the song "Blue Monk" in F major. The key signature has one flat (Bb). The music is written in bass clef with a 4/4 time signature. The bass line consists of eighth and quarter notes. Chord symbols are placed above the staff to indicate the harmonic structure. The piece ends with a double bar line and the instruction "To solo".